



PRODUCT & USAGE GUIDE





QualiTru makes gathering accurate liquid samples as easy as 1, 2, 3.

Welcome to QualiTru Sampling Systems

For over three decades, QualiTru Sampling Systems (formerly QMI) has been the most trusted brand for sterile liquid sampling. We continue to earn this trust every day with our commitment to advancing the science of sampling, development of new products and providing practical and reliable sampling solutions to a wide variety of industries.

The diversity of QualiTru Sampling Systems' products offers the food, beverage, dairy and other industries the most dependable method of ensuring regulatory compliance and the highest level of safety assurance.

In addition to our market-leading products, our staff of sampling experts and scientists work closely with our customers to assist and consult on the most efficient and effective sampling protocols for their individual needs.

QualiTru systems are used daily in well over 1000 United States dairy processing plants and dairy farms and are also utilized in more than 30 countries worldwide. QualiTru Sampling Systems regulatory approvals include:

- FDA M-I-06-12 Needle Only Method
- FDA M-I-08-5 Milk Tank Trucks
- FDA M-I-06-6 Direct Load
- FDA M-I-12-4 Universal Dairy Farm Samples
- FDA M-I-16-17 Appendix N Samples

1 SANITARY PORTS

QualiTru 316L stainless steel sanitary ports are 3-A Authorized and manufactured under rigorous quality control standards in an ISO 9001 certified facility. They are designed to allow easy access for raw or sterile process monitoring.

2 STERILE SEPTA

Our sterile septa allow sterile samples to be drawn a single time from each channel virtually eliminating the risk of contamination.

3 STERILE COLLECTION UNITS

We offer a complete line of single-use, sterile disposable collection units in a variety of sizes and configurations for virtually every application.

QUALITRU SYSTEMS ARE IDEAL FOR:

- **Direct Load** – The best continuous flow sampler for an accurate representative sample of the entire volume of milk.
- **Vertical/Horizontal Milk Tanks** – The QualiTru systems provide sterile access to fluid raw milk product without requiring the opening of manway doors.
- **String Sampling** – An accurate system for isolation of contamination and for monitoring milk quality and overall herd health.
- **Post-pasteurization** – QualiTru Sampling Systems' products provide the most effective methods for post-pasteurization monitoring for the identification and control of contaminants.
- **Process Management/Verification** – The flexibility of QualiTru port placement allows users to pinpoint specific areas of concern for corrective action.
- **Milk Tanker Trucks** – Allows sampling from the side or rear of truck, removing the risk of falling while providing representative samples.
- **PMO Appendix N** – QualiTru Sampling Systems provides an FDA approved, easy method for gathering samples from trucks for antibiotic testing.



REAL WORLD PROVEN
FDA COMPLIANT

TRAINING & SUPPORT

Additional resources, including training videos, Standard Operating Procedures in English and Spanish, interactive schematics, white papers, research studies and the latest news and product introductions are available at qualitru.com.

Training
&
Support

QualiTru offers a complete line of sterile sampling products

QualiTru sterile fluid access systems are easy to install, easy to use and easily the most reliable sampling technique available. Designed for process monitoring for such applications as mastitis control, microbial contamination, component verification and regulatory compliance, QualiTru provides cost-effective solutions for the highest level of quality assurance.

TruStream Sanitary Ports

Our 3-A Certified stainless steel sanitary ports are designed to work in a wide variety of locations including processing lines, silos, tanks and milk tanker trucks. They provide easy access for sterile process monitoring of microbial contamination as well as line and tank sampling.

TRUStream Ports

TruStream sanitary ports can be customized to your specification.



**THE RIGHT SOLUTION,
THE RIGHT STANDARDS
AND THE RIGHT EQUIPMENT
FOR ACCURATE SAMPLING.**

QualiTru sterile septa are available in both 7- and 12- needle guide channels. They are designed to allow for samples to be drawn a single time from each channel, dramatically reducing the risk of cross-contamination. Each septa is made of high-quality, food-grade materials and features a label that clearly indicates which channels have been used. Once all channels have been used, simply replace with a new septa.



TRUStream Septa



7-CHANNEL
STERILE SEPTA

12-CHANNEL
STERILE SEPTA

QualiTru Sterile Collection Units

QualiTru offers a complete line of sterile, disposable collection units in a variety of volumes, making them ideal for all your sampling needs. All our collection units provide worry-free handling, storing and shipping solutions.

TRUDRAW SINGLE SAMPLER

The TruDraw Single Sampler is a sterile, sealed container with an attached needle for drawing samples up to two ounces. This easy-to-use sampler is leak-proof and offers security features and sample tracking capabilities. The TruDraw works with all TruStream Septa.



The TruDraw Single Sampler offers:

- Self-sealing cover
- Tamper-evident feature
- Track and trace capabilities
- Analyzer compatibility

Peristaltic Pump

The TruMotion sampling system utilizes a peristaltic pump to draw liquid samples into a sterile TruStream collection unit. This system is a continuous flow sampling system that collects a universal sample over the entire process run.

TruMotion Collection bags for peristaltic pump use:

- 2 Liter/3.2 milliliter silicone tubing
- 2 Liter/2.0 milliliter silicone tubing



TRUSTREAM Sampling Assembly Collection Bags



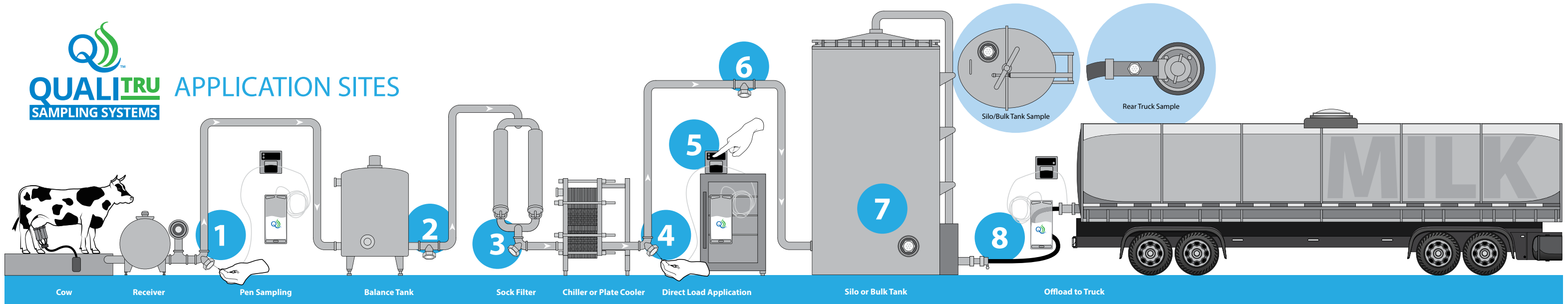
TruStream sterile collection bags come in a variety of sizes and configurations for any sampling need. QualiTru also offers TruMotion Sampling Assemblies designed to work with peristaltic pumps. Each oxygen-permeable bag is equipped with a needle and tubing and works with all TruStream Septa.

TruStream Collection bags:

- 250 Milliliter
- 2 Liter
- 7 Liter



Dairy Farm Traditional Farm Loading Application Sites



1 Pen/ Group/ String Sampling
Installed via a QualiTru TruStream Sanitary Port on the “positive pressure” side of the milking system, after the parlor and before the balance tank. Can also be installed to diagnose possible system contamination from the parlor to the storage tank.

2 System Diagnostic
Isolate your system from the parlor to the sock filters to identify key segments of your system and to verify the system Clean In Place (CIP) cycle. Can be used for troubleshooting quality and cleaning issues when installed in a series.

3 System Diagnostic
Isolate your system from the parlor to the sock filters to identify key segments of your system and to verify the system CIP cycle. Can be used for troubleshooting quality and cleaning issues when installed in a series.

4 Direct Load
Installed via a QualiTru TruStream Sanitary Port, either elbow or straight, we recommend it be installed as close to the chiller outlet as possible. Refrigerator and peristaltic pump should be located as close to the QualiTru Sanitary Port as possible. Samples can be used for regulatory and quality.

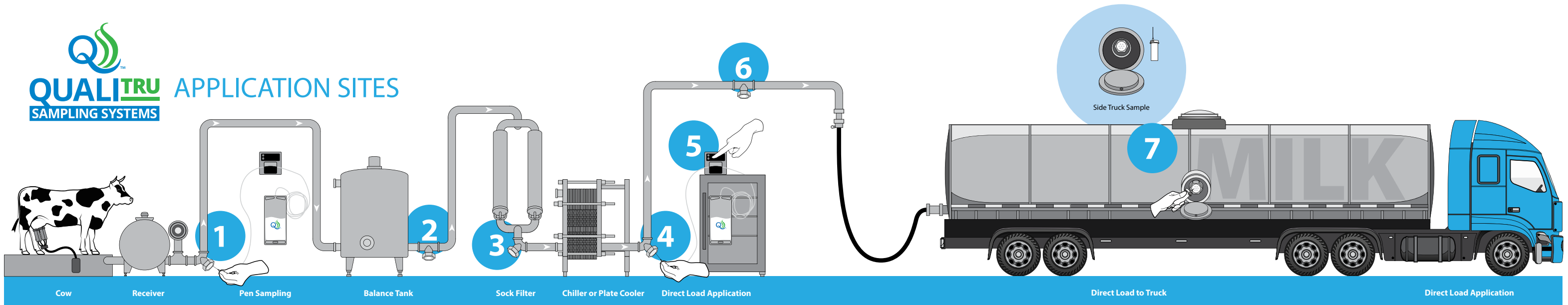
5 Peristaltic Pump
The peristaltic pump is the key to a controlled sample volume of milk that is collected into the QualiTru Sterile Collection Bags. Since the sampling system is a constant flow, you get a complete representative sample of all milk that flows by, for the most dependable regulatory and quality sample available on the market today.

6 Line Sampling
Install a QualiTru TruStream Sanitary Port at any point throughout your process as part of a diagnostic function, system quality check, CIP cleanliness check, and overall milk quality samples. Used at the backside of your receiver jar, this provides an efficient location to collect string samples.

7 Silo Sampling
Installed via a QualiTru TruStream Recessed Sanitary Port, representative samples can be collected after proper agitation of the silo. Since this system is CIP, there is no need for disassembly, washing, and sanitizing push-button valves.

8 Silo and Bulk Tank Representative Sample Collection Without Agitation
Installed via a beveled seat QualiTru TruStream Sanitary Port, representative samples can be collected using a peristaltic pump and a TruStream Sterile Collection Bag. This sampling method can be used without agitating the bulk tank or silo.

Dairy Farm Direct Load to Truck Application Sites



1 Pen/ Group/ String Sampling

Installed via a QualiTru TruStream Sanitary Port on the “positive pressure” side of the milking system, after the parlor and before the balance tank. Can also be installed to diagnose possible system contamination from the parlor to the storage tank.

3 System Diagnostic

Isolate your system from the parlor to the sock filters to identify key segments of your system and to verify the system CIP cycle. Can be used for troubleshooting quality and cleaning issues when installed in a series.

2 System Diagnostic

Isolate your system from the parlor to the sock filters to identify key segments of your system and to verify the system CIP cycle. Can be used for troubleshooting quality and cleaning issues when installed in a series.

4 Direct Load

Install a QualiTru TruStream Sanitary Port, either elbow or straight; we recommend it be installed as close to the chiller outlet as possible. Refrigerator and peristaltic pump should be located as close to the QualiTru Sanitary Port as possible. Samples can be used for regulatory and quality.

5 Peristaltic Pump

The peristaltic pump is the key to a controlled sample volume of milk that is collected into the QualiTru Sterile Collection Bags. Since the sampling system is a constant flow, you get a complete representative sample of all milk that flows by, for the most dependable regulatory and quality sample available on the market today.

6 Line Sampling

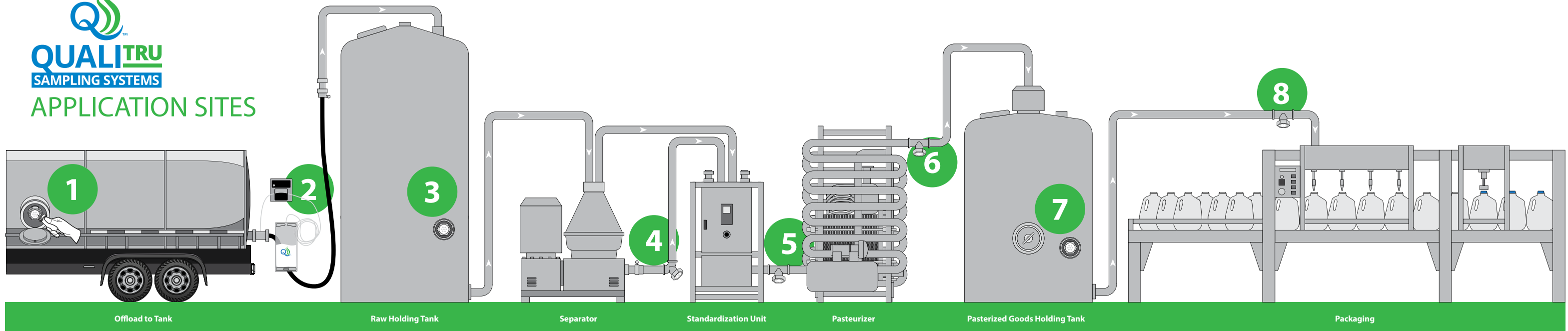
Installed via a QualiTru TruStream Sanitary Port at any point throughout your process as part of a diagnostic function, system quality check, CIP cleanliness check, and overall milk quality samples. Used at the back side of your receiver jar, this provides an efficient location to collect your string samples.

7 For Appendix N Sampling of the Milk Tanker Truck

(PMO Appendix N) Sampling at the processing plant via the Side Sampler, providing a safer physical sampling environment for certified samplers.

Dairy Milk Processor Application Sites

QUALITRU
SAMPLING SYSTEMS
APPLICATION SITES



1 Milk Tanker Truck Sampling

Installed via a QualiTru Sanitary Recessed Port with Security Lid, an official Pasteurized Milk Ordinance (PMO) Appendix N (antibiotic) sample can be obtained at the processing plant without the need to climb to the top of the milk tanker truck, assuring a safer physical sampling environment for certified samplers.

2 Receiving Bag Sampling

Install at the outlet valve on a tanker truck via a beveled seat QualiTru TruStream Sanitary Port. A representative sample of the milk in the milk tanker truck can be collected via a peristaltic pump and sterile collection bag as the truck is being unloaded in the receiving bay.

3 Raw Product Sampling

Installed via a QualiTru TruStream Sanitary Recessed Port in the raw receiving silo for regulatory or milk quality samples.

4 System Diagnostic

Install a QualiTru TruStream Sanitary Port at any location throughout your fluid path as part of the diagnostic function, system quality check, CIP cleanliness check and overall milk quality samples.

5 System Diagnostic

Installed via a QualiTru TruStream Sanitary Port before or after each piece of equipment as part of a system diagnostic function, system quality check, CIP cleanliness check and overall milk quality samples.

6 Post-Pasteurization Monitoring

Installed via a QualiTru TruStream Sanitary Port on the backside of the pasteurizer to monitor post-pasteurization contamination and to verify pasteurization effectiveness and efficiency. Can also be part of the diagnostic function, system quality check, CIP cleanliness check and overall milk quality sampling.

7 Pasteurized Holding Tank

Installed via a QualiTru TruStream Sanitary Recessed Port in the finished goods/ pasteurized tank or silo to obtain regulatory or quality system samples.

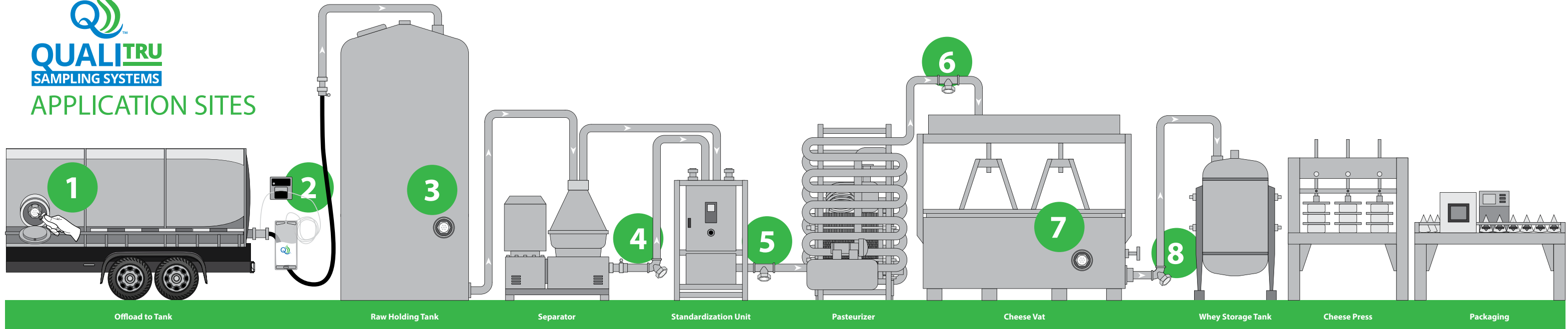
8 Filler

Install a QualiTru TruStream Sanitary Port just prior to the filler for regulatory or quality system samples. Samples can also be used to verify quality prior to packaging and also to verify the lack of contaminants system-wide.

Training
&
Support

Dairy Cheese Processor Application Sites

QUALITRU
SAMPLING SYSTEMS
APPLICATION SITES



1 Milk Tanker Truck Sampling

Installed via a QualiTru Sanitary Recessed Port with Security Lid, an official Pasteurized Milk Ordinance (PMO) Appendix N (antibiotic) sample can be obtained at the processing plant without the need to climb to the top of the milk tanker truck, assuring a safer physical sampling environment for certified samplers.

2 Receiving Bag Sampling

Install at the outlet valve on a tanker truck via a beveled seat QualiTru TruStream Sanitary Port. A representative sample of the milk in the milk tanker truck can be collected via a peristaltic pump and sterile collection bag as the truck is being unloaded in the receiving bay.

3 Raw Product Sampling

Install a QualiTru TruStream Sanitary Recessed Port in the raw receiving silo for regulatory or milk quality samples.

4 System Diagnostic

Install a QualiTru TruStream Sanitary Port at any location throughout your fluid path as part of the diagnostic function, system quality check, CIP cleanliness check and overall milk quality samples.

5 System Diagnostic

Install a QualiTru TruStream Sanitary Port before or after each piece of equipment as part of a system diagnostic function, system quality check, CIP cleanliness check and overall milk quality samples.

6 Post-Pasteurization Monitoring

Install a QualiTru TruStream Sanitary Port on the backside of the pasteurizer to monitor post-pasteurization contamination and to verify pasteurization effectiveness and efficiency. Can also be part of the diagnostic function, system quality check, CIP cleanliness check and overall milk quality samples.

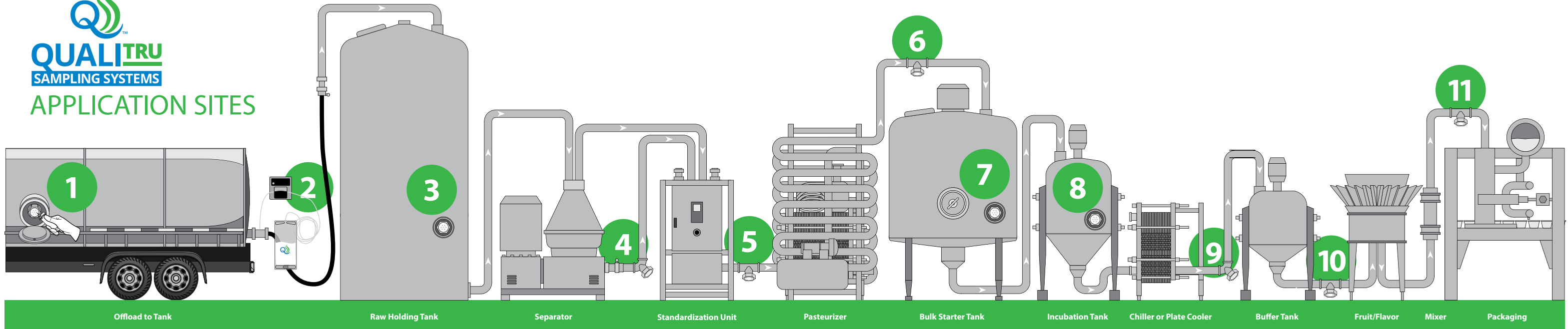
7 Inoculating

Installed via a QualiTru TruStream Sanitary Tank Port or Recessed Port on the exterior of the vat, this allows access to inoculate the milk with the specific cultures while still keeping the system closed from the environment. This unique approach helps to mitigate the risk of unwanted microorganisms from entering the vat and contaminating the product.

8 Whey Analysis

Install a QualiTru TruStream Sanitary Port off the vat outlet valve and prior to the whey storage tank or silo for regulatory or quality samples. Whey filtration sampling is used primarily for process monitoring/solid analysis.

Dairy Cultured Processor Application Sites



- 1 Milk Tanker Truck Sampling**
Installed via a QualiTru Sanitary Recessed Port with Security Lid, an official Pasteurized Milk Ordinance (PMO) Appendix N (antibiotic) sample can be obtained at the processing plant without the need to climb to the top of the milk tanker truck, assuring a safer physical sampling environment for certified samplers.
- 2 Receiving Bag Sampling**
Install at the outlet valve of a tanker truck via a beveled seat QualiTru TruStream Sanitary Port. A representative sample of the milk in the milk tanker truck can be collected via a peristaltic pump and sterile collection bag as the truck is being unloaded in the receiving bay.
- 3 Raw Product Sampling**
Install a QualiTru TruStream Sanitary Recessed Port in the raw receiving silo for regulatory or milk quality samples.

- 4 System Diagnostic**
Install a QualiTru TruStream Sanitary Port at any location throughout your fluid path as part of the diagnostic function, system quality check, CIP cleanliness check and overall milk quality samples.
- 5 System Diagnostic**
Install a QualiTru TruStream Sanitary Port before or after each piece of equipment as part of a system diagnostic function, system quality check, CIP cleanliness check and overall milk quality samples.
- 6 Post-Pasteurization Monitoring**
Install a QualiTru TruStream Sanitary Port on the backside of the pasteurizer to monitor post-pasteurization contamination and to verify pasteurization effectiveness and efficiency. Can also be part of the diagnostic function, system quality check, CIP cleanliness check and overall milk quality samples.

- 7 Bulk Starter Tank**
Installed via a QualiTru TruStream Sanitary Tank Port or Recessed Port on the exterior of the tank or silo, this gives you access to inoculate the milk with specific cultures, while still keeping the system closed from the environment. The unique approach helps to mitigate the risk of unwanted microorganisms from entering the vat and contaminating the product. Can also be used to take quality or regulatory samples.
- 8 Incubation Tank**
Install a QualiTru TruStream Sanitary Port on the side of the incubation tank to obtain quality or process samples.
- 9 After The Plate Cooler or Chiller**
Install a QualiTru TruStream Sanitary Port (either elbow or straight); we recommend it be installed as close to the chiller outlet as possible. A peristaltic pump should be located as close to the QualiTru TruStream Sanitary Port as possible. Samples can be used to monitor regulatory and quality. Can also be used for troubleshooting quality and cleaning issues when installed in a series.

- 10 Diagnostic**
Install a QualiTru TruStream Sanitary Port at any location throughout your fluid path as part of a diagnostic function, system quality check, CIP cleanliness check and overall milk quality samples.
- 11 Filler**
Install a QualiTru sanitary port just prior to the filler for regulatory or quality system sampling. Samples can also be used to verify sterility of product just prior to packaging and to verify the lack of contaminants system-wide.



The simple, three-step system for gathering accurate samples



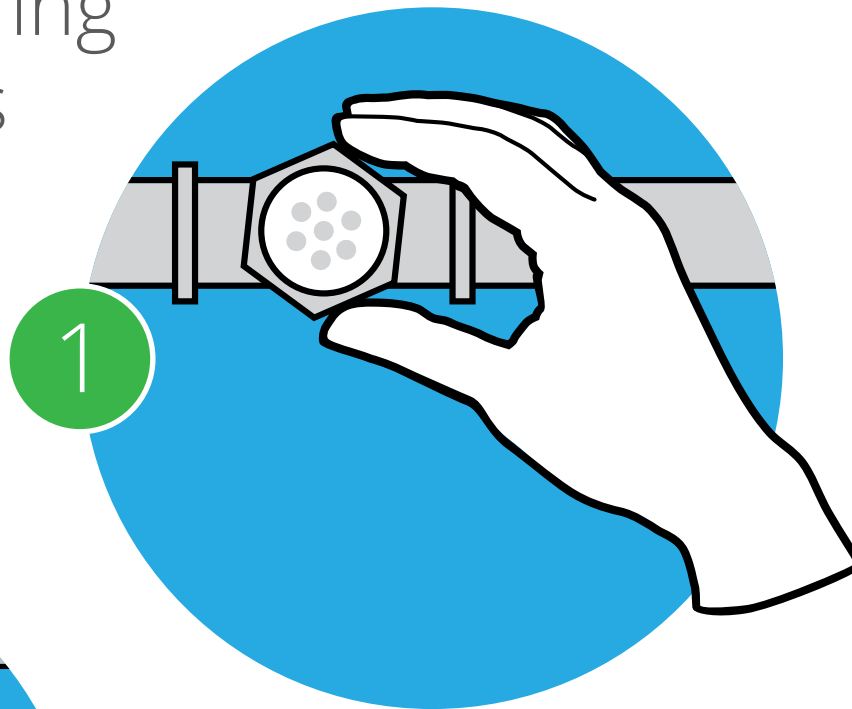
ONLINE TRAINING CENTER

QualiTru provides extensive training material in both written and video formats at qualitru.com/training-center. These easy to understand and easy to follow usage guides are an ideal tool for ensuring your employees use the QualiTru Sampling Systems correctly to ensure collecting accurate samples for testing or quality control.

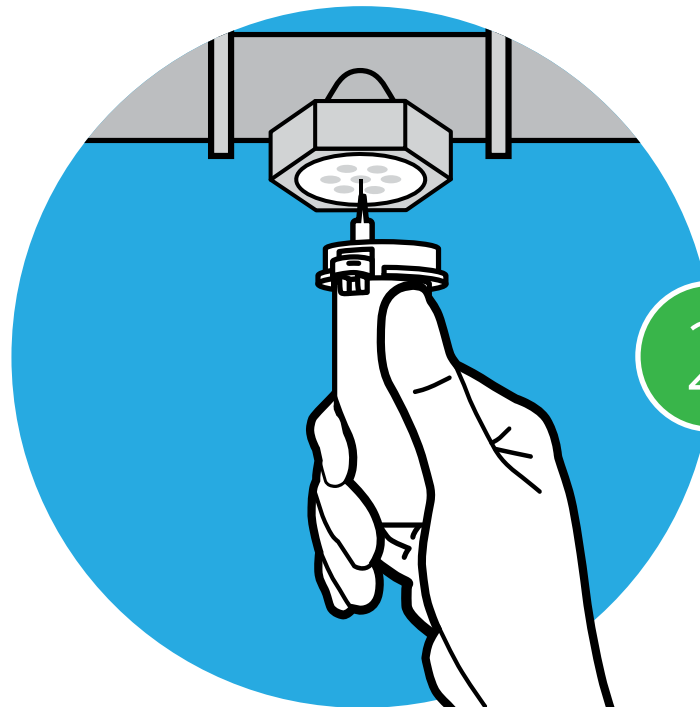
In addition to training videos, illustrated schematics and installation drawings, the training center also features written Standard Operating Procedures (SOPs) in Spanish and English. You may also call us at 651-501-2337 if you need assistance.

QualiTru training videos include:

- Diagnostic Sampling and Process Verification Training Guide
- Needle Insertion Training Guide
- Silo Sampling Training Guide
- Inline/Direct Load Sampling System Training Guide
- Appendix N & Antibiotic Truck Sampling Training Guide
- Pen or String Sampling with a Peristaltic Pump Training Guide

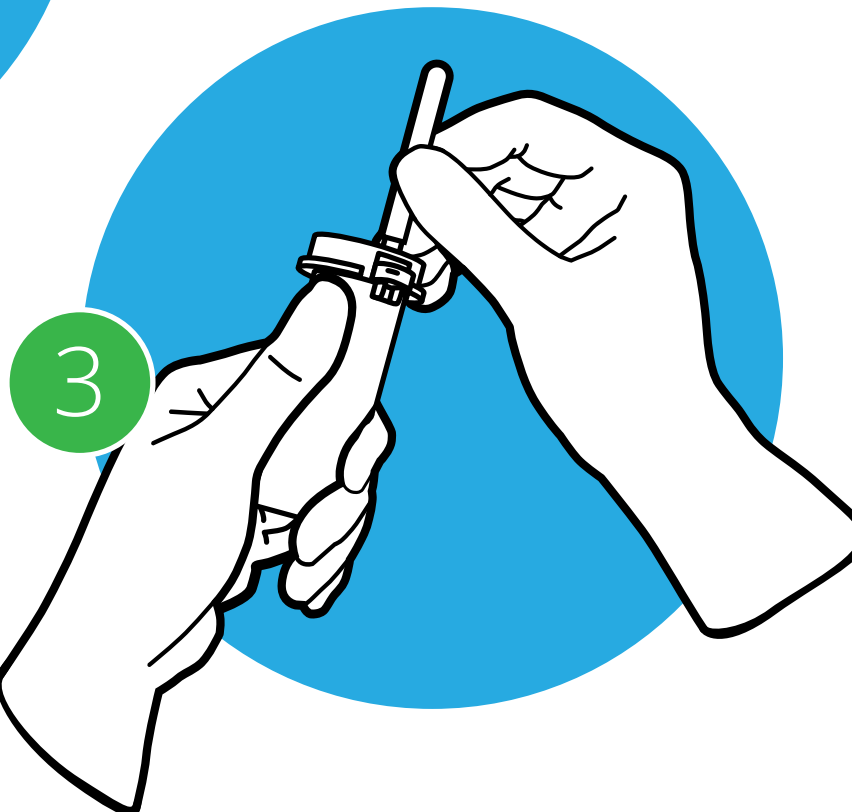


Insert 7- or 12-channel septa into the TruStream stainless steel port. TruStream stainless steel ports are available in multiple configurations and are also available in custom configurations.



Insert needle into septa. Allow liquid to flow into collection unit until 3/4 full. This allows sterile samples to be drawn a single time from each channel without the risk of cross contamination.

Remove needle and discard needle and blue cap in sharps disposable container.



QUALITRU SAMPLING SYSTEMS MAKES ORDERING FAST AND EASY

Whether you need a complete system, new sanitary ports, collection units, tools, replacement items or septa it only takes one call to get it done. Our experienced QualiTru representatives are always happy to help. Most orders ship the same day either through UPS or FedEx.

TO ORDER CALL 651-501-2337
sales@qualitru.com

QualiTru Auto-Ship Option - QualiTru can arrange automatic, scheduled shipments for consumables. Just tell us what products, quantity and time you would like your order processed.

Training & Support



651-501-2337
sales@qualitru.com
qualitru.com