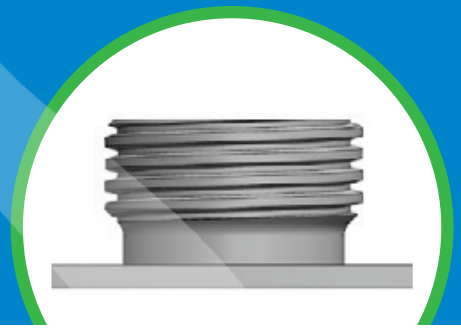


INSTALLATION GUIDE

TruStream7 Tank Port
Part Number: 212113



This sanitary tank port is to ONLY be installed on flat surfaces such as tank silo doors by a welder that is trained to perform sanitary welds where a proper polish can be achieved (e.g. 3-A Sanitary Standards or ASME BPE).

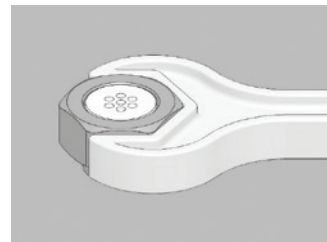
Any installation on an elbow, straight pipe, u-bend, etc. may result in product contamination from the welding installation and is not covered under the QualiTru Warranty.



INSTALLATION

- **Step 1:** Cut a 1.5" hole in the tank and prepare the tank surfaces for welding.
- **Step 2:** Insert the TruStream7 Tank Port into position.
- **Step 3:** Weld all around the exterior seam using compatible filler rod material. Grind flush and polish to a 32Ra finish (this applies to the internal, fluid contact surface).
- **Step 4:** Insert the TruStream7 Septum into the TruStream7 Tank Port.
- **Step 5:** Secure the TruStream7 Septum with the TruStream7 Hex Nut. Hand tighten, then tighten an additional 1/8" turn with a wrench.

Do NOT over-tighten as this could damage the Septum.



Please go to: <https://qualitru.com/resources/training-demo-videos> for instructions on how to insert your septum properly.



651-501-2337 • Sales@QualiTru.com • QualiTru.com
471 Hayward Avenue North, Oakdale, MN 55128

