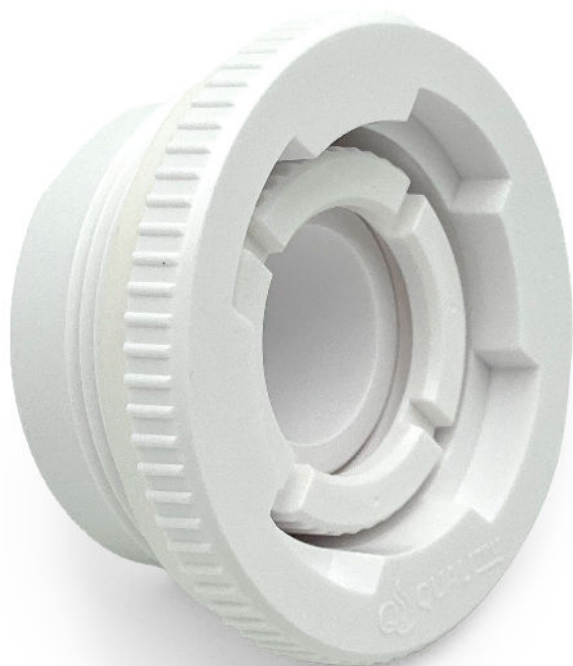


# TECHNICAL SPECIFICATIONS

TruStream™ Drum Port  
PN 231010



Contact [Sales@QualiTru.com](mailto:Sales@QualiTru.com)  
for installation instructions.

Component / Parameter	Specification / Material
<b>Physical</b>	
Diameter	2.91" / 74mm
Overall Height	1.38" / 35mm
Outer Thread Pattern	NPS
<b>Materials</b>	
Port Housing (White)	POM Plastic (Polyoxymethylene)
Surface Finish (Internal Port Housing)	< 20 µin / 5 µm
Fastening Nut (White)	POM Plastic (Polyoxymethylene)
Gasket (White)	EPDM Rubber
<b>Technical</b>	
Fastening Nut Torque	90 in/lbs (max) / 10.17 N-m (max)
Drum Thread Port	30 ft/lbs (max) / 40.67 N-m (max)
Temperature	34 F (min) / 1°C (min) 190°F (max) / 87°C (max)
Pressure	-2.5 PSI (min) / 30 PSI (max)
<b>Regulatory</b>	
FDA Food Contact Compliant	Yes
BPA Free	Yes
Phthalate Free	Yes



651-501-2337 • [sales@qualitru.com](mailto:sales@qualitru.com) • QualiTru.com