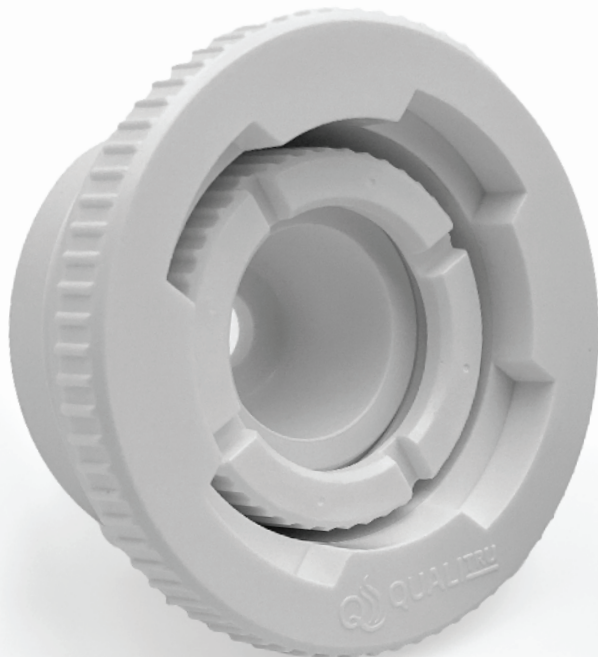


INSTALLATION GUIDE

TruStream™ Drum Port
Part Number: 231010



The TruStream Drum Port is designed to be installed in drum containers of various sizes and materials containing a standard 2" fine/NPS threaded opening. The TruStream Drum Port, fitted with the TruStream7 Septum, provides a convenient sampling solution for liquid storage containers.

For proper sample collection, please refer to Proper Needle Insertion into QualiTru® Septum guide.

INSTALLATION

- **Step 1:** Inspect the drum container for overall good condition, ensuring that the 2" drum opening is free of gasket surface or thread damage.
 - **Step 2:** Prior to installing the drum port into the drum container, sanitize the inside of the TruStream Drum Port with an approved sanitizer spray or alcohol wipes. Then insert a TruStream7 Septum into the TruStream Drum Port.
 - **Step 3:** Secure the Septum with the Drum Port nut onto the Drum Port housing. Start tightening by hand until snug and then finish tightening, applying approximately 40-50 in/lbs of torque, using the Drum Port Wrench.
 - **Step 4:** Carefully insert the TruStream Drum Port into the 2" fine/NPS drum opening. Ensure that the threads from the drum and port are properly aligned to prevent cross-threading.
 - **Step 5:** Tighten TruStream Drum Port by hand to start, ensuring proper seating of the Drum Port gasket. Complete the process by applying approximately 15-25 ft/lbs of torque with the Drum Port wrench.
- Do NOT over-tighten or exceed TruStream Drum Port product specifications as this could damage the septum or drum port.**



651-501-2337 • Sales@QualiTru.com • QualiTru.com
471 Hayward Avenue North, Oakdale, MN 55128